



# ŁÓDŹ

## TRAVEL

### GUIDE



Akademia  
Humanistyczno  
Ekonomiczna  
w Łodzi

# GENERAL INFORMATION



Lodz is the fourth largest urban centre in Poland with a population of about 700,000. Although the history of Lodz goes back a long way (it obtained city rights in the 15th century), its greatest development and later boom happened in the 19th century, when Lodz became a centre of the cloth industry.

Since then, the town has struggled with many difficulties, contradictions and differences, which were vividly documented in the novel *The Promised Land* written by Polish Nobel Prize-winning author Wladyslaw Reymont. He portrayed the multinational society of Lodz, where Poles, Jews and Germans lived together, with the inhuman face of early Polish capitalism where the rich exploited the poor. The contrasts can still be seen in the architecture of the city, where luxurious mansions coexist with redbrick factories and old tenement houses.



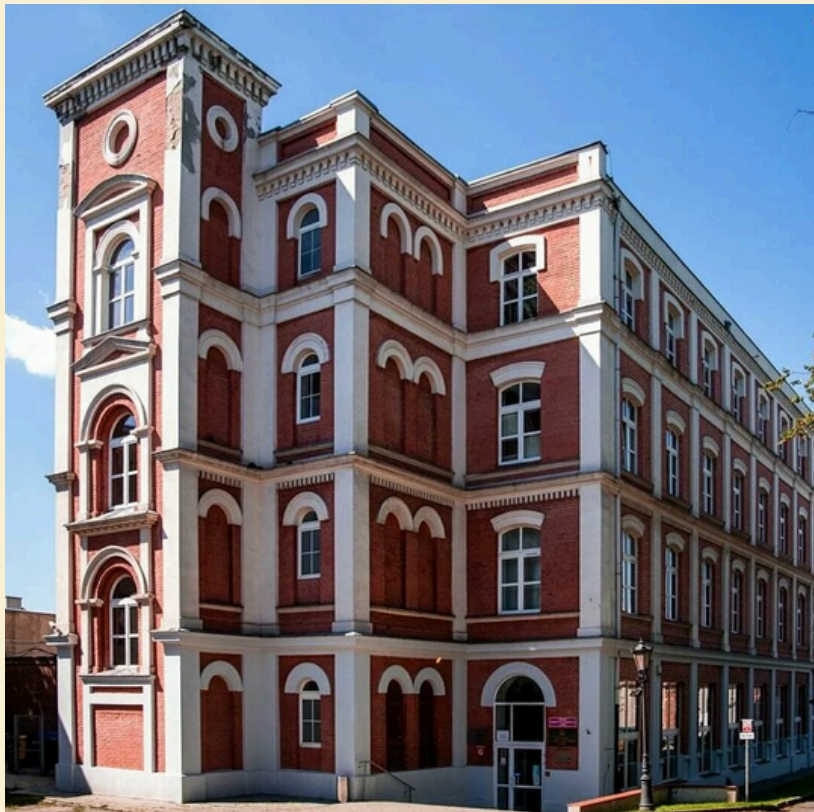
Today Lodz is a significant cultural centre, internationally known for its Film School, a cradle for the best Polish cameramen, actors and directors, including Andrzej Wajda and Roman Polanski. The local Museum of Art has the best collection of contemporary Polish art in the country. The city is thriving with industry and business rapidly developing, moving away from textiles, which has been in decline since 1991.

(<https://www.staypoland.com/>)

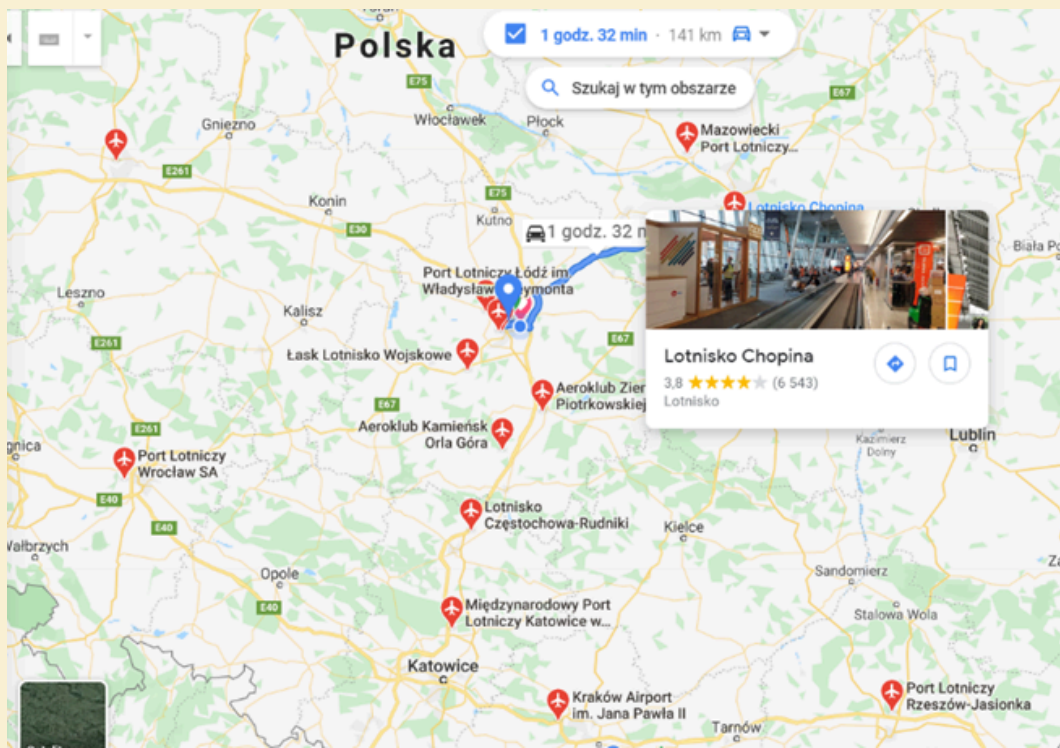
# LOCATION



**Akademia Humanistyczno-Ekonomiczna w Łodzi (The University of Humanities and Economics in Łódź) is based on 26 Sterlinga street. Building is located in the 19th century factory sites. In those well-preserved and restored walls with a unique industrial atmosphere are organized educational, cultural and business events. There is also a canteen. (<https://www.ahe.lodz.pl/>)**



# HOW TO REACH ŁÓDŹ



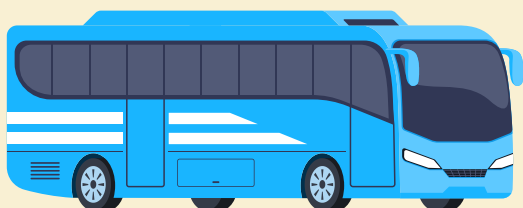
## **Warsaw-Chopin International Airport (WAW) (140 km)**

**There is a train from Chopin Airport (Okęcie) to Warszawa Centralna (Warsaw Central Station) /Warszawa Zachodnia (Warsaw West Station) and from Warszawa Centralna / Warszawa Zachodnia to Łódź Fabryczna**

**Chopin Airport to/from Warszawa Centralna/ Warszawa Zachodnia (ticket in ticket machine, cost 3,40 PLN) - travel by city train SKM**

**Warszawa Centralna/ Zachodnia to/from Łódź Fabryczna (the price is around 40 PLN in the ticket window or online, (It will be much more expensive on the train)**

**Here you can check timetable and buy ticket: <https://rozklad-pkp.pl/en>**



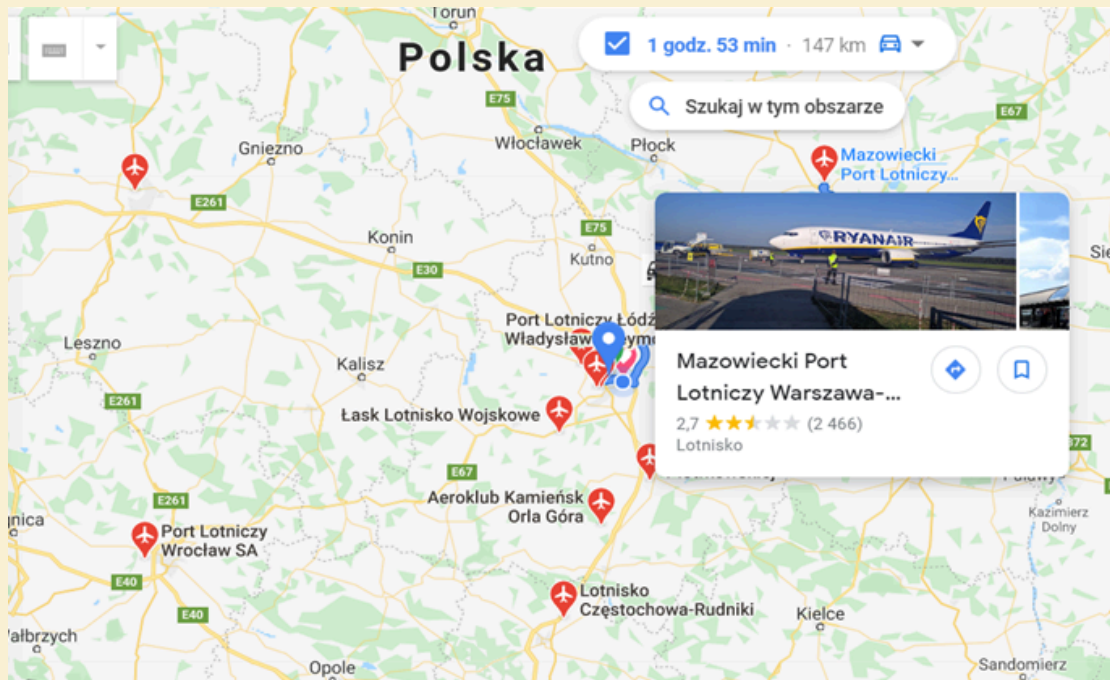
**Bus connection to/from Lodz is also provided.**

**Please check various options here:**

**<https://www.e-podroznik.pl>**

**<https://www.flixbus.pl/>**

# HOW TO REACH ŁÓDŹ



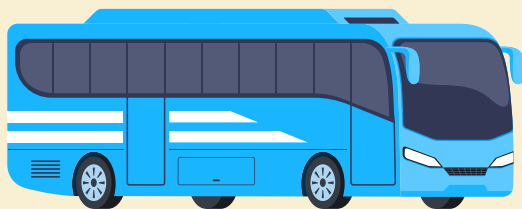
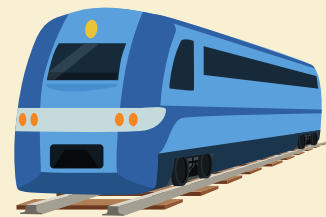
## **Warsaw- Modlin Airport (WMI) (147 km)**

**There are trains and buses to the Warsaw City Centre.**

**You check available options here:**

**<http://www.mazowieckie.com.pl/>**

**<https://rozklad-pkp.pl>**



**There is also direct bus connection from  
Warsaw Modlin Airport to to Lodz**

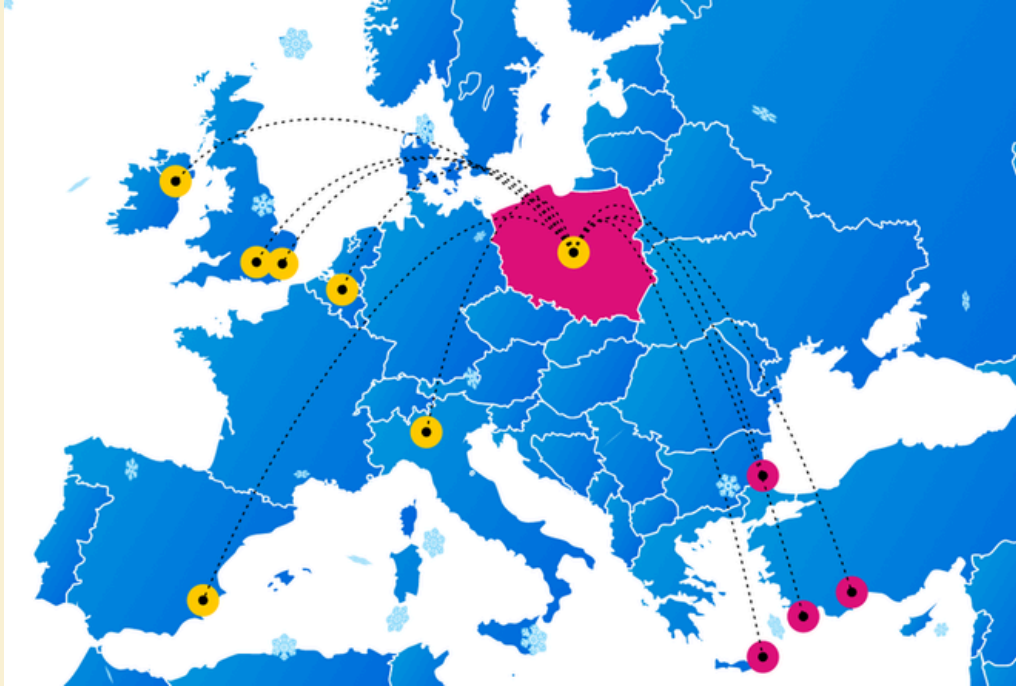
**Fabryczna by Flixbus:**

**<http://www.flixbus.pl/>**

**The taxi from Warsaw airports to Lodz will cost  
approx. 500 - 600 PLN**



# HOW TO REACH ŁÓDŹ



## Lodz Airport (LCJ) (6 km from the city centre)

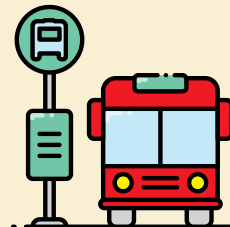
This is a small airport with just a few flight connections.

In Lodz you can take a taxi or use public transport.

Check public transport connections here: <https://jakdojade.pl/lodz/trasa/>

Direct access to the Lodz Airport is provided by the Bus Line No. 65A and 65B. Page with bus timetables: (<https://www.mpk.lodz.pl/rozklady/linie.jsp#Buses>)

The bus stops are located in front of Passenger Terminal.



Taxi to the city centre costs about 40-50 PLN.  
You can take Bolt or Uber - it is cheaper option then taxi.

# WHERE YOU CAN EAT IN THE CITY CENTER

There are thousands of restaurants in Lodz with various types of cuisine. Restaurants in the city serve both traditional Polish dishes and food from around the world. The city is also full of bars and pubs. The best pubs in Lodz are located on Piotrkowska Street where you can also find many cafes and pastry shops.

Please check some recommendations here:

[https://www.tripadvisor.com/Restaurants-g274837-c10637-](https://www.tripadvisor.com/Restaurants-g274837-c10637-Lodz_Lodz_Province_Central_Poland.html)

[Lodz\\_Lodz\\_Province\\_Central\\_Poland.html](https://www.tripadvisor.com/Restaurants-g274837-c10637-Lodz_Lodz_Province_Central_Poland.html)

or here: <https://lodz.travel/en/tourism/where-to-eat/>

## MUST TRY POLISH FOODS



**DUMPLINGS**



**PORK CHOP**





**ŻUREK**



**CHEESECAKE**



# ACCOMODATION

- 
- **Basecamp by XIOR**, ul. Rewolucji 1905 roku 45, 90-215 Łódź (450 meters 6 min walk) <https://www.basecampstudent.com/student/lodz-rewolucji/>
  - 170zł/per night in single-room
  - 100 zł/per night per person in double-room
- 

To receive these prices, please use the password: **BIP AHE26** and contact directly: [radoslaw.chuchrak@xior.eu](mailto:radoslaw.chuchrak@xior.eu) (Radosław Chuchrak)

- Boutique Hotel's II, ul. Rewolucji 1905r. 8 (1km, 12 min walk) <https://www.hotels24.com.pl/en/>
- Stare Kino Hotel, Piotrkowska 120 (2,2 km, 27 min walk) <https://www.cinemahotel.pl/en/>
- Puro, Ogrodowa 16 (1,7 km, 20 min walk) <https://purohotel.pl/en/lodz/>
- Andels, Ogrodowa 17 (1,9 km, 23 min walk) <https://www.viennahouse.com/en/vienna-house-andels-lodz/rooms.html>
- The Loom Hotel, Ogrodowa 21, (2,1 km, 26 min walk) <https://www.loom.com.pl/en/>
- City Center Rooms, Piotrkowska 91 (1,8 km, 20 min walk) <http://www.citycenterrooms.pl/en/>
- Ambassador Premium, Kilińskiego 145, (2,3 km, 28 min walk) <https://www.hotelambasador.eu/premium>

All the hotels are close to the City Centre and Piotrkowska Street and also within walking distance from AHE. Taxi from mentioned hotels to AHE is around 25-30 PLN.

If you look for something different, please check [www.booking.com](http://www.booking.com) and look in the district: **Śródmieście**

You can also find useful information about accommodation on this page: <https://lodz.travel/en/tourism/where-to-sleep/>



# FREE TIME

## MANUFATURA

Shopping and entertainment center:

- shops, restaurants,
- bowling center, fitness center,
- cinema, theatre
- laser games
- Museum of the Factory,
- Museum of Lodz
- Museum of Art



**Piotrkowska Street:** architecture, restaurants, pubs, shops;





**EC1: The City of culture: architecture, history, museum**



**...and many more!**

**Please check: Tourist information: <https://lodz.travel/en/>**



Please remember that in Poland the currency is Polish Zloty (PLN), 1 euro is approx. 4,2 PLN and you can pay with your credit card almost everywhere.

**Emergency 112    Police 997**  
**Fire fighters 998    Ambulance 999**



**We are looking forward to seeing you!**

## **CONTACT**

**Angelika Wieczorek - Erasmus+ Mobility Coordinator,  
International Mobility Projects Manager  
e-mail: [erasmus@ihe.lodz.pl](mailto:erasmus@ihe.lodz.pl)  
+48 695 380 441 (phone and WhatsApp)**

